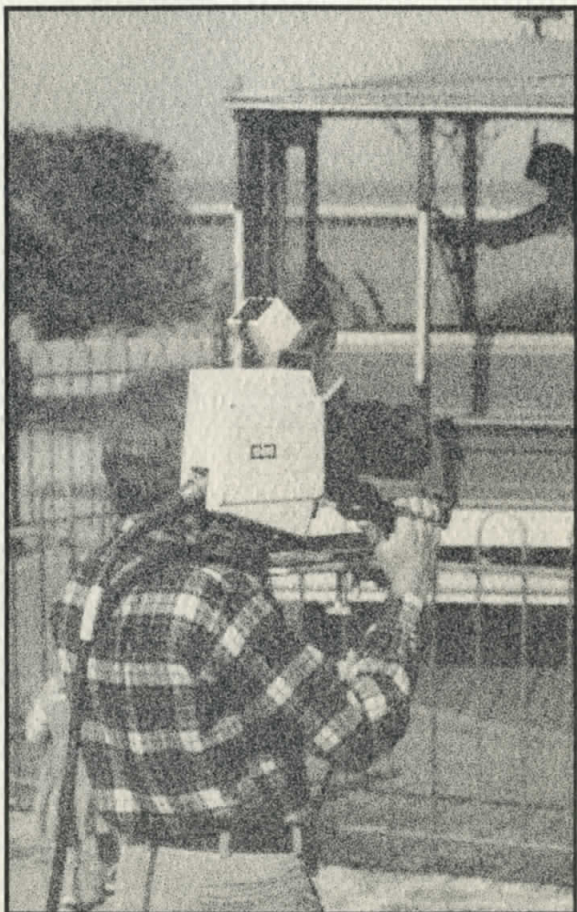


# CEI



## **CEI-300 SERIES COLOR TELEVISION CAMERA SYSTEM**

**Effective March 24, 1979**

**CEI-310 Basic EFP Camera. . . . . \$41,980.00**



### **CEI-310 Basic Studio Camera Configuration:**

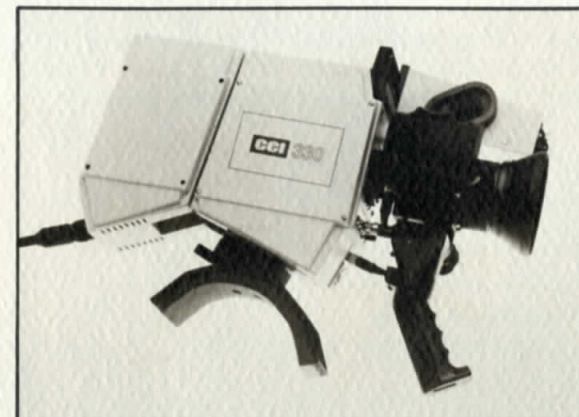
**310 Camera Head and Electronics Unit, complete with:**

- Universal AC Power Supply
- 3" Viewfinder
- Ocular Adapter
- Set of (3) BC4908 Saticon Image Tubes, Studio Grade
- Fujinon A12x9 Zoom Lens with Servo Iris/Zoom
- Camera Cable, 50 Feet, Camera Head to Electronics Unit
- Quick Disconnect Tripod Mount
- Carrying Cases, Set of 2
- Maintenance Manual

**CEI-310 Basic Studio Camera. . . \$44,155.00**



**CEI-330 Basic EFP Camera. . . . . \$54,830.00**



### **CEI-330 Basic Camera Configuration:**

**330 Camera Head and Electronics Unit, complete with:**

- Digital Control Unit
- Universal AC Power Supply
- 330 Auxiliary Power Supply
- 3" Viewfinder
- Ocular Adapter
- Set of (3) BC4908 Saticon Image Tubes, Studio Grade
- Fujinon A12x9 Zoom Lens with Servo Iris/Zoom
- Camera Cable, 1000 Ft. Camera Head to Electronics Unit
- Peter Lisand Shoulder Mount with Body Brace
- Quick Disconnect Tripod Mount
- Carrying Cases, Set of 3
- Maintenance Manual

### **CEI-310 Basic Studio Camera Configuration:**

**310 Camera Head and Electronic Unit, complete with:**

- Universal AC Power Supply
- 8" Viewfinder
- Studio Adapter
- Lens Shroud
- Options Board, RGB, Buffered Sync and Subcarrier, Program Audio Mix
- Set of (3) BC4908 Saticon Image Tubes, Studio Grade
- Fujinon A12x9 Zoom Lens with Servo Iris/Zoom
- Lens Studio Conversion Kit
- Electronics Unit Rack Adapter
- Camera Cable, 50 Feet, Camera Head to Electronic Unit
- Maintenance Manual

See other side for System Component Price List ►

**SYSTEM COMPONENT PRICE LIST CEI-300 SERIES COLOR TELEVISION CAMERA SYSTEMS EFFECTIVE MARCH 24, 1979**

**Part No. CAMERA HEAD & ELECTRONICS List Price**

5027-01	310 Camera Head & Electronics Unit (NTSC) (Includes Maintenance Manual, Carrying Cases, & Quick Disconnect Tripod Mount)	\$28,350
5027-011	310 Camera Head & Electronic Unit (PAL-I/B) (Includes Maintenance Manual, Carrying Cases, & Quick Disconnect Tripod Mount)	28,350
—	330 Camera Head & Electronics Unit (NTSC or PAL-I/B) (Includes Maintenance Manual, Carrying Cases, & Quick Disconnect Tripod Mount)	39,350

**POWER OPTIONS**

5150	Universal AC Power Supply	\$ 1,500
—	330 Auxiliary Power Supply	1,000
—	330 Digital Control Unit	11,000
6326C	Battery Belt w/Overnight Charger & Cord (14.4V-8AH, One Hour Running Time)	500
7026C	Battery Belt w/Overnight Charger & Cord (14.4V-14AH, 1.5 Hour Running Time)	750
8326C	Battery Belt, Fast Charge (Requires Charger) (14.4V-8AH, One Hour Running Time)	575
9400C	Fast Charger For Above, 115 Volt	275

**VIEWFINDERS**

4645-1/ 5006	3" Direct View w/Hood and Ocular Adapter	\$ 1,500
4650-1/ 4638-1/ 4949-1	8" Viewfinder w/Studio Adapter & Lens Shroud	2,675

**OPTIONS BOARDS FOR ELECTRONICS UNIT**

5078	RGB, Buffered Sync & Subcarrier, Program Audio Mix	\$ 900
—	As Above, with SMPTE Time Code Generator	1,900
5078-1	RGB, Buffered Sync & Subcarrier, Program Audio Mix, Auto Pedestal, Iris Window	1,350
—	As Above, with SMPTE Time Code Generator	2,350
—	SMPTE Time Code Generator Only	1,200

**CEI**

**880 Maude Avenue  
Mountain View, California 94043  
415/969-1910 TLX. 348 436**

NOTE: ALL PRICES ARE SUBJECT TO CHANGE WITHOUT NOTICE

**Part No. REMOTE CONTROLS List Price**

5095-1	RCP, with Iris/Ped Joystick, Intercom, Black Stretch, R.B. Paint, R.B. Horizontal & Vertical Centering	\$ 1,500
4226	RCP Console Adapter (Allows two 5095-1 Side-By-Side)	100
—	Blank Panel for 4226	25
5194	RCP with Iris, Ped, Intercom, Black Stretch	425
5241	RCP Console Adapter (Allows 4 5294 Side-By-Side)	100
5240	Blank Panel for 5241	25

**MOUNTING HARDWARE**

4648-1	Electronics Unit Pedestal Adapter (EU Mount for Self-Contained Configuration)	\$ 400
5190	Electronics Unit Rack Adapter	150
5223	CEI Quick Reaction Shoulder Mount	300
5090	Peter Lisand Body Brace Shoulder Mount	350
5214	Quick Disconnect Tripod Mount (Required to Mount Portable Camera to Tripod)	150
5352	Backpack Harness	100

**CABLE**

	310 Camera Head to Electronics Unit (4658 Standard Cable, to 600 Feet Lengths Maximum or 5288 Mini Cable, to 150 Feet Lengths Maximum)	
	6 Feet	\$ 450
	25 Feet	525
	50 Feet	600
	100 Feet	800
	Other Lengths \$3.75/Foot Plus \$425 Termination	
	330 Camera Head to Electronics Unit & 330 Auxiliary Power Supply	
	1000 Feet	1,100
	2500 Feet	2,600
	Other Lengths \$1.00/Foot Plus \$100 Termination	
5148	Remote Control Panel to Electronics Unit	
	10 Feet	100
	50 Feet	150
	Other Lengths \$1.00/Foot Plus \$100 Termination Termination & Connectors (1000 Feet Maximum)	
—	330 to TV-81 Cable Adapter (10 Feet, Set of 2)	1,100
EA447-10VTR	VTR to Electronics Unit	
	10 Feet	\$ 250

**Part No. IMAGE TUBES List Price**

5701-0165	Plumbicon, 2/5" Studio Grade, X01427 /Red	\$ 1,735
5701-0179	/Blue	
5701-0175	/Green	
5701-0117	Saticon, 2/5" Studio Grade, BC4908, R,G or B	1,735

**LENSES**

<b>Fujinon</b>		
3801-0120	A12x9, 9mm to 108mm, f/1.7, Servo Zoom & Iris	\$ 4,675
3801-0130	A14x10, 10mm to 140mm, f/1.9, Servo Zoom & Iris, Built-In 2x Extender	6,180
—	A17x9, 9mm to 153mm, f/1.9, Servo Zoom & Iris, Built-In 2x Extender	9,700
—	Studio Conversion Kit for Above Lenses	600
—	AF6B, Wide Angle, Fixed Focus, f/1.4 Servo Iris	2,995
<b>Angenieux</b>		
5246	15x9.5, 9.5mm to 142mm, f/1.8, Servo Zoom & Iris	5,380
—	Wide Angle Adapter, 7mm to 105mm (Front Load)	2,070
—	Telephoto Adapter, 16mm to 240mm (Front Load)	2,270
—	25x10, 10mm to 250 mm, f/1.4, Servo Zoom & Iris	12,600
<b>Schneider</b>		
—	20x17, 17mm to 340mm, f/2.0 to f/4.0, Manual Zoom & Focus	12,000
<b>Canon</b>		
—	J10x8.5, 8.5mm to 85mm, f/1.8 to f/2.2, Servo Zoom & Focus	3,500

**ACCESSORIES**

1406-0040	Transit Case, Camera Head	\$ 700
1406-0045	Transit Case, Electronics Unit (Above, Set of 2)	
1406-0070	310 Carrying Case, Camera Head	500
1406-0075	310 Carrying Case, Electronics Unit (Above, Set of 2, One Set Included in Basic Camera Price)	
—	330 Carrying Case, Set of 3 (Included in Basic Camera Price)	750
5128	Maintenance Parts Kit (NTSC)	600
5127	Maintenance Parts Kit (PAL-I/B)	600
—	Maintenance Manual (One Included in Basic Camera Price)	125